

3M™ Premium Opaque Coloured Films
Scotchcal™ 100 and Controltac™ 180Cv2 Series

Colour Card Reference Guide



With this new Premium Opaque Coloured Film range offering, and depending on the intended use, graphic manufacturers and signmakers have the choice between the reference in Electrocut Films and the reference in Positionable/Repositionable Graphic Films.

3M™ Scotchcal™ Opaque Graphic Film Series 100

- 99 standard stock colours
- For flat to curved surfaces, including rivets
- Fine cuttings (letters, logos ...) down to 10 mm vertical Helvetica
- Transparent adhesive allows same appearance both sides, when applied on glass
- Durability zone 1: Black and White 12 years / Colours 8 years / Metallics 3 years
- Mostly 50 m rolls for colours
- Special colours minimum order quantity 5 rolls

• Service temp -40 °C to +110 °C

3M™ Controltac™ Opaque Graphic Film Series 180 Cv2

- 35 standard stock colours
- For flat to curved surfaces, including rivets and corrugations
- Cutting (letters, logos ...) down to 80 mm vertical Helvetica
- Large graphics where air bleed is needed
- Large graphics where positionability and repositionability is needed
- Grey adhesive appearance for major part of the range, improves opacity
- Durability zone 1: Black and White 10 years / Colours 8 years / Metallics 5 years
- 25 m rolls for colours (except CT 180Cv2-1482 available in 50 m rolls)
- Special colours minimum order quantity 10 rolls
- Screenprintable
- Option for 1.52 m width with minimum order quantity

• Service temp -60 °C to +107 °C



Commercial Solutions

Hermeslaan 7
1831 Diegem
Belgium

www.3Mgraphics.com/eu

All printed examples of colours are approximations of the original colours and are subject to fluctuations due to the printing process. To determine the exact colour or choice of colours, please request an original 3M colour swatch or individual colour samples of your preferred colours.

Please recycle. Printed in Germany
© 3M 2015. All rights reserved.

Colour Card Reference Guide

			
White 100-10 180Cv2-10	Transparent 100-114 180Cv2-114	Ivory 100-383	Dark Ivory 100-731
			
Aluminium Metallic 100-58 180Cv2-58	Anthracite Metallic 100-144 180Cv2-144	Chamois Metallic 100-2443	Silver Metallic 100-2444 180Cv2-2444
			
Pearl Metallic 100-2445 180Cv2-2445	Honey Gold Metallic 100-2446	Gold Metallic 100-54	Bronze Metallic 100-2447
			
Pistachio Metallic 100-2448	Indigo Metallic 100-2455	Light Violet Metallic 180Cv2-2458	Aubergine Metallic 100-2460
			
Platinum Metallic Matte 100-2438			

Free of leadchromate pigments – RoHS compliant

Important Information

The use of lead free pigments required by REACH regulation is leading to two consequences:

1 Despite our ultimate efforts to match with lead free pigments colours made so far with lead containing pigments, we have not been able to match perfectly some colours which, in the reformulated version, are showing slight colour variations. For these colours, we have added a "/5" to the current colour references, in order to allow users to recognize the colour reference, but also to check before use if the slight colour variation can be accepted by their customer.

In this colour card you will find the 13 colours, which are produced with 65 µ caliper, identified with their colour name and colour reference in *italic*.

2 Users of cast coloured films know by experience that some colour hues are offering less opacity than others. This was already the case for films made with lead containing pigments. Lead free pigments have less opacity performance than lead containing pigments, which make the opacity of these colours, when produced with lead free pigments, even lower. In order to minimize this reduced opacity as much as possible, we are producing these specific colours with slightly thicker caliper (65 µ instead of 50 µ). On some electro-cutting equipments, this may mean need to adjust the cutting knives pressure.

Colour Card Reference Guide

			
Yellow 100-25/5 180Cv2-25/5	Cadmium Yellow 100-15/5 180Cv2-15/5	Spring Yellow 100-2432/5	Light Lemon Yellow Pantone 3965 C 100-385
			
Signal Orange Pantone 1505 C 100-2434	Mandarin 100-410/5	Bright Orange Pantone 165 C 100-14 180Cv2-14	Light Orange 100-717/5 180Cv2-717/5
			
Apricot 100-598/5	Geranium Red 100-176/5 180Cv2-176/5	Light Red 100-368/5	Tomato Red Pantone 1797 C 100-13 180Cv2-13
			
Red Orange Pantone 485 C 100-266	Dark Burgundy Pantone 1817 C 100-386	Burgundy Red 100-723	Ruby Red 100-23/5 180Cv2-23/5
			
Cardinal Red Pantone 187 C 100-53 180Cv2-53	Red Pantone 200 C 100-720	Chestnut Brown 100-29	Brown 100-107
			
Deep Mahogany Brown Pantone 476 C 100-19	Violet Pantone 520 C 100-265	Bright Violet 100-721	Royal Purple 100-595
			
Pink 100-454	Magenta Pantone 674 C 100-821	Intense Blue Pantone 300 C 100-47	Sky Blue 100-415 180Cv2-415



Olympic Blue
Pantone 7461 C

100-57



Light Blue

100-123 | 180Cv2-123



Soft Blue
Pantone 2915 C

100-453 | 180Cv2-453



Sapphire Blue
Pantone 280 C

100-37 | 180Cv2-37



Dark Blue
Pantone 2757 C

100-003



Fjord Blue
Pantone 301 C

100-1789



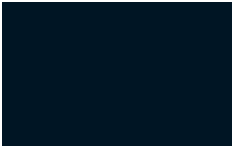
Vivid Blue
Pantone 2945 C

100-17 | 180Cv2-17



Traffic Blue

100-002 | 180Cv2-002



Insignia Blue
Pantone 539 C

100-27



Deep Blue
Pantone 274 C

100-1794



Nightshadow Blue

100-2189



Marine Blue

100-1182



Cobalt Blue
Pantone 661 C

100-2417



Light Navy
Pantone 648 C

100-724



Khaki

100-2418



Fir Tree Green
Pantone 3308 C

100-008



Forest Green
Pantone 3305 C

100-727



Dark Green
Pantone 3425 C

100-56



Emerald Green
Pantone 340 C

100-027



Sherwood Green
Pantone 349 C

100-450



Bright Green
Pantone 348 C

100-722 | 180Cv2-722



Green
Pantone 356 C

100-122



Apple Green

100-719/5 | 180Cv2-719/5



Light Green

180Cv2-1482/5



Moss Green

100-2420/5



Light Green
Pantone 368 C

100-047 | 180Cv2-047



Lime Green

100-449 | 180Cv2-449



Teal
Pantone 321 C

100-603



Jade Green
Pantone 326 C

100-718



Aqua
Pantone 3258 C

100-716



Robin Egg Blue
Pantone 318 C

100-600



Shadow Blue

100-725/5



Wedgewood Blue

100-726/5



Esso Beige

100-467/5



Safari Beige

100-2424



Sierra Beige

100-2425



Camouflage Green

100-2436/5



Pond Green

100-2034



Black Olive Matte

100-2290



Black
Pantone Process Black C

100-12 | 180Cv2-12



Black Matte

100-22 | 180Cv2-22



Grey
Pantone 425 C

100-012 | 180Cv2-012



Dark Grey

100-706



Mountain Grey

100-2426



Office Grey

100-2435/5



Traffic Grey

100-038 | 180Cv2-038



Mid Grey
Pantone 423 C

100-822 | 180Cv2-822



Medium Grey

100-605/5 | 180Cv2-605/5



Light Grey

100-384/5



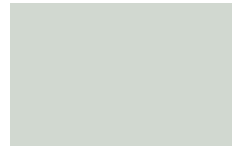
Marble Grey

100-2427



Stone Grey

100-079/5 | 180Cv2-079/5



Pearl Grey

100-11/5 | 180Cv2-11/5



Nevada Beige

100-2429/5



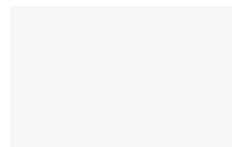
Beige Grey

100-728



Beige

100-119/5



White Matte

100-20 | 180Cv2-20



Science.
Applied to Life.™



It's a wrap.

3M™ Wrap Film Series 2080

Matte Slate Blue Metallic
M287

Lead the way.

You've always been one to make the bold choice. Align yourself with a leader. We're reinventing 3M™ Wrap Film with features that will leave your competition in the dust.

A Protective Film Layer on gloss colors.

Stays on during installation then is removed quickly, easily and cleanly after install to reduce surface impressions and scratches.

Unique, conformable film layers.

Provide a better fit around curves and in channels for sleek appearance and easier installation.

An improved warranty.

Gives your customers confidence with up to seven years of protection on vertical applications.*

Knowledge and support.

3M™ Wrap Film Series 2080 is a durable, high-quality product that lets you express your creativity and bring your vision to life.

Backed by 3M technical support, training and certification programs that help you and your staff keep up with the latest techniques.

Gloss Black
G12

Gloss

 <p>Cinder Spark Red *GP253</p>	 <p>Red Metallic *G203</p>	 <p>Dragon Fire Red *G363</p>	 <p>Dark Red G83</p>	 <p>Flame Red G53</p>	 <p>Hot Rod Red G13</p>	 <p>Fiery Orange *G364</p>	 <p>Liquid Copper *G344</p>
 <p>Burnt Orange G14</p>	 <p>Deep Orange G24</p>	 <p>Bright Orange G54</p>	 <p>Sunflower G25</p>	 <p>Lemon Sting *G335</p>	 <p>Bright Yellow G15</p>	 <p>Lucid Yellow G55</p>	 <p>Green Envy *G336</p>
 <p>Kelly Green G46</p>	 <p>Light Green G16</p>	 <p>Atomic Teal *G356</p>	 <p>Midnight Blue GP272</p>	 <p>Boat Blue G127</p>	 <p>Deep Blue Metallic *G217</p>	 <p>Blue Metallic *G227</p>	 <p>Blue Raspberry *G378</p>
 <p>Cosmic Blue *G377</p>	 <p>Intense Blue G47</p>	 <p>Blue Fire *G337</p>	 <p>Ice Blue *G247</p>	 <p>Sky Blue G77</p>	 <p>Fierce Fuchsia *G348</p>	 <p>Hot Pink G103</p>	 <p>Black Rose *GP99</p>
 <p>Plum Explosion *GP258</p>	 <p>Wicked *GP298</p>	 <p>Ember Black *GP282</p>	 <p>Galaxy Black *GP292</p>	 <p>Black Metallic *G212</p>	 <p>Black G12</p>	 <p>Anthracite *G201</p>	 <p>Charcoal Metallic *G211</p>
 <p>Glacier Gray *GP291</p>	 <p>White Aluminum *G120</p>	 <p>Sterling Silver *G251</p>	 <p>Storm Gray G31</p>	 <p>White Gold Sparkle *GP240</p>	 <p>White G10</p>	 <p>Light Ivory G79</p>	 <p>Gold Metallic *G241</p>

Satin

Vampire Red *SP273	Smoldering Red *S363	Canyon Copper *S344	Bitter Yellow *S335	Apple Green S196	Key West S57	Ocean Shimmer *S327	Perfect Blue *S347
Thundercloud *S271	Dark Gray *S261	Black S12	Gold Dust Black *SP242	Battleship Gray S51	White Aluminum *S120	Frozen Vanilla *SP240	White S10
Pearl White *SP10	Caramel Luster *SP59						

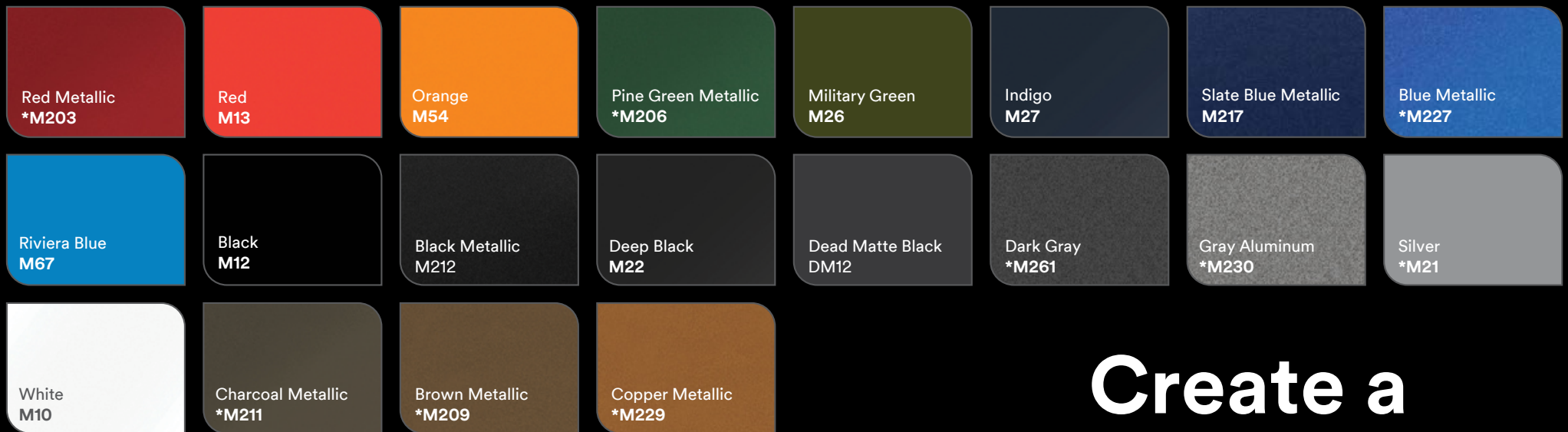
Textures

Shadow Military Green SB26	Shadow Black SB12	Brushed Black Metallic *BR212	Matrix Black MX12	Carbon Fiber Black CFS12
Brushed Steel *BR201	Brushed Titanium *BR230	Brushed Aluminum *BR120	Carbon Fiber Anthracite *CFS201	Carbon Fiber White CFS10

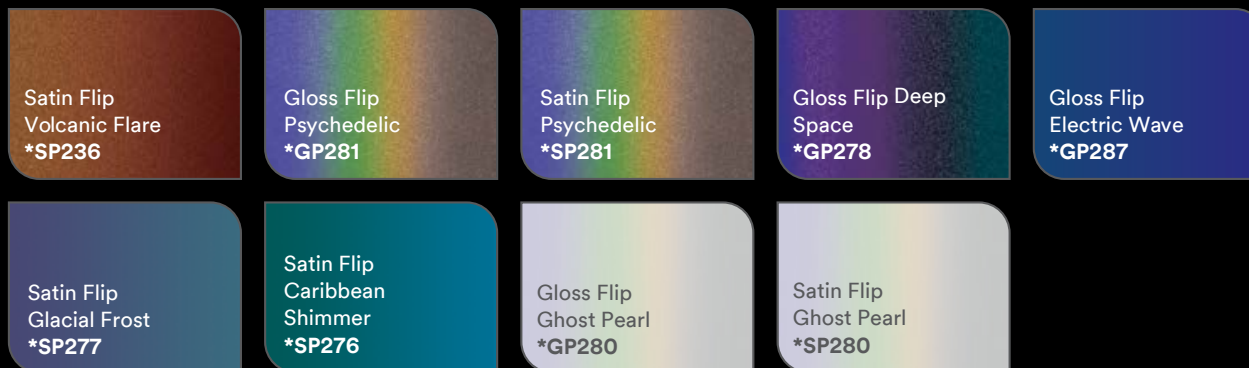
Chrome

Gloss Silver Chrome **GC451

Matte



Color Flips



Create a sensation.

Choose from a bold assortment of colors, patterns and textures to design a vehicle wrap that stands out from the crowd.

Contact your 3M sales representative for more information or visit

3M.com/2080

Metallic and/or pearl colors shown on monitor and when printed are approximate representations of actual colors available.
© 3M 2019. All rights reserved. 3M is a trademark of 3M. Used under license in Canada. Printed in USA. Please recycle. 75-5100-2743-8

Training and testing.

Learn up-to-date installation techniques, industry best practices and 3M-specific solutions. 3M offers best-in-class graphics installation training and testing programs across the country.

- At locations in St. Paul, Minnesota; Hutchinson, Kansas; Fort Lauderdale, Florida; Addison, Texas; and Burbank, California.
- Via our fully equipped Mobile Training Vehicle that can deliver hands-on training at your location

To sign up for training, visit [3M.com/InstallationPrograms](https://www.3m.com/InstallationPrograms).

Improved warranty.

The most comprehensive warranty in the industry — up to eight years in a vertical application.*

3M™ MCS™ Warranty		Vehicle Wraps		
Product offering might vary from country to country. Local availability of selected graphics construction should be clarified with your local 3M subsidiary.			Vertical	Horizontal
		Zone 1	8 years	3 years
		Zone 2	7 years	2 years
2080	All colors	Zone 3	6 years	1 year

Visit [3M.com/GraphicsWarranties](https://www.3m.com/GraphicsWarranties) for additional applications and zone and warranty information.

*Warranty varies by zone. Warranty information is not valid for Gloss Silver Chrome GC451.





3MTM ScotchcalTM
Translucent Graphic Film
Series 3630

Colour Card Reference Guide



				
White 3630-20	Black Pantone Process Black 3630-22	Rose Mauve Pantone 190 C 3630-68	Pink Pantone 224 C 3630-108	Vivid Rose Pantone 206 C 3630-78
				
Intense Magenta Pantone 241 C 3630-118	Raspberry Pantone 220 C 3630-133	Plum Purple Pantone 2622 C 3630-128	Burgundy Pantone 188 C 3630-49	Cardinal Red 3630-53
				
Dark Red 3630-73	Regal Red Pantone 187 C 3630-83	Red 3630-33	Light Tomato Red 3630-43	Poppy Red 3630-143
				
Orange Pantone 1655 C 3630-44	Tangerine Pantone 151 C 3630-84	Kumquat Orange Pantone 1375 C 3630-74	Sunflower Pantone 123 C 3630-25	Marigold 3630-75
				
Golden Yellow Pantone 1235 C 3630-125	Yellow Pantone 109 C 3630-015	Light Lemon Yellow Pantone 3955 C 3630-115	Brilliant Green Pantone 376 C 3630-106	Lime Green Pantone 368 C 3630-136
				
Light Kelly Green Pantone 347 C 3630-146	Vivid Green Pantone 355 C 3630-156	Bright Jade Green 3630-116	Green Pantone 349 C 3630-26	Holly Green 3630-76

				
Dark Emerald Green Pantone 3435 C 3630-126	Teal Green Pantone 322 C 3630-246	Turquoise Pantone 3282 C 3630-236	Royal Blue Pantone 274 C 3630-87	Blue Pantone 281 C 3630-36
				
European Blue 3630-137	Sultan Blue Pantone 288 C 3630-157	Bristol Blue Pantone 294 C 3630-97	Bright Blue Pantone 2945 C 3630-167	Intense Blue Pantone 300 C 3630-127
				
Process Blue Pantone Process Blue 3630-337	Light European Blue 3630-147	Olympic Blue 3630-57	Evening Blue 3630-317	Silver Grey Pantone 430 C 3630-51
				
Shadow Grey Pantone 409 C 3630-71	Slate Grey 3630-61	Duranodic Pantone Black C 3630-69	Dark Brown Pantone 4625 C 3630-59	Rust brown Pantone 483 C 3630-63
				
Light Rust Brown Pantone 181 C 3630-109	Bronze Pantone 471 C 3630-129	Ivory 3630-005	Light Beige Pantone 468 C 3630-149	Gold Metallic Pantone 873 C 3630-131
				
Gold Nugget 3630-141	Silver Pantone 877 C 3630-121			



High
Performance Films
for ElectroCutGraphics

All printed examples of colours are approximations of the original colours and are subject to fluctuations due to the printing process. To determine the exact colour or choice of colours, please request an original 3M colour swatch or individual colour samples of your preferred colours.